



PLEASE RETURN ALL COMPONENTS TO THE LAB, DO NOT DISPOSE OF CHAMBER

## DEPLOYMENT INSTRUCTIONS FOR RADON LLT E-PERM™ ELECTRETS

### LONG-TERM LLT E-PERM™ ELECTRETS

Long-term radon measurement determines the average radon concentration in a dwelling for measurement periods in excess of **91 days**. If the average of two co-located E-PERM™ devices is 200 Bq/m<sup>3</sup> or higher, Health Canada recommends further action be taken to mitigate radon levels. During this type of measurement, there are no requirements for occupants to change their lifestyle once the devices have been put in place. It is recommended for the monitoring period to be within the heating season as this is when Radon levels and indoor occupancy are typically highest.

### DEPLOYMENT INSTRUCTIONS OF RADON DEVICES

The E-PERM™ devices should be placed as soon as possible after receiving to ensure accurate results. To make a long-term measurement, the E-PERM™ devices should be opened and placed in the lowest occupied or potentially occupied (4-hours per day) area of the house, i.e. the lowest area which residents currently use or which could be readily adapted for use, typically the basement. It is important to co-locate a replicate device for every 10 samplers (i.e. if there is one device then one replicate, if there are 20 then two replicates), and one device for every room less than 200 m<sup>2</sup> (~2,000 ft<sup>2</sup>).

The E-PERM™ device(s) should be located at least 30 inches above the floor, not closer than 24 inches to the ceiling, and away from exterior walls, doors, and windows. Bathrooms, kitchens, laundry rooms, root cellars, garages, crawl spaces, or areas adjacent to a sump pump are not suitable measurement locations. The E-PERM™ device(s) should be left undisturbed until the test is terminated, after which it should be returned for analysis as soon as possible. It is recommended that at least half the long-term exposure period be during a season in which the dwelling is heated.

### HOW TO DEPLOY AN LLT E-PERM™ ELECTRET

**CAUTION:** DO NOT TOUCH THE SURFACE OF THE ELECTRET - IT WILL INVALIDATE THE TEST

1. Remove the LT Electret and L Chamber from the bag.



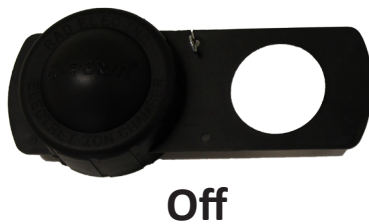
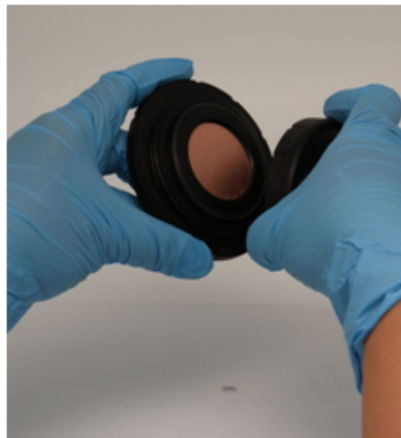
**L-Chamber**



**LT Electret**



2. Unscrew the “Keeper Cap” from the Electret. Carefully screw the electret into the bottom of the L Chamber and make sure that the chamber is "ON". This will start the radon test. **Replace the “Keeper Cap” in the zip lock bag and save.**



3. Place the LLT E-PERM™ according to Health Canada’s recommended deployment protocols as described on the first page. **Once the test starts, do not move the detector and leave it for the required time period. A single detector can be used to test ONE location only.**
4. Record the location of each E-PERM™ on the provided chain of custody form using the Serial Number located on the bottom of the electret.
5. Record the Date and Time the radon test was started.
6. To terminate the test, remove the electret from the L Chamber and replace the “Keeper Cap” that had been stored in the zip lock bag. When the electret has been screwed back into the “Keeper Cap”, the radon test has been terminated.
7. Record the Date and Time the radon test was terminated.
8. Return detectors along with deployment information for analysis as soon as possible.

**PLEASE RETURN ALL COMPONENTS TO THE LAB, DO NOT DISPOSE OF CHAMBER**