

Passive Sampler User Guide

Installation

1. Open AGAT container and remove sampling sheet.



2. Fill out sample sheet with company information & location, site name/number, date and time the puck was installed and installer's initials.

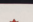
AGAT Laboratories 
 Passive Air Quality Sampling
 Main: 403.299.2000

Company: _____
 Address: _____
 Contact: _____
 Phone: _____

Sampling Information

H₂S (Hydrogen Sulphide)
 SO₂ (Sulfur Dioxide)
 NO_x (Nitrogen Dioxide)
 VOC (Volatile Organic Compound)
 NH₃ (Ammonia)
 O₃ (Ozone)
 Other (specify): _____

Location: _____
 Start Date: _____
 Start Time: _____
 Conditions: _____

AGAT Laboratories 
 Passive Air Quality Sampling
 Main: 403.299.2000

Company: _____
 Address: _____
 Contact: _____
 Phone: _____

Sampling Information

H₂S (Hydrogen Sulphide)
 SO₂ (Sulfur Dioxide)
 NO_x (Nitrogen Dioxide)
 VOC (Volatile Organic Compound)
 NH₃ (Ammonia)
 O₃ (Ozone)
 Other (specify): _____

Location: #27
 Start Date: 28 Jan 15
 Start Time: 12:30

3. Remove puck from bag and remove puck cap, setting the puck aside on clean, level area, filter side facing upwards. Replace cap in bag and put bag and sampling sheet back in the AGAT container. Reseal AGAT container with lid.



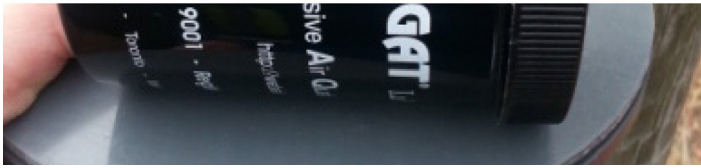
4. Holding the grey passive holder horizontally with circular seats facing up and while gripping the sides of the puck, place each puck so it is hanging from a circular seat, filter side facing downwards. The topside of the passive holder should be flush with the backs of the pucks and the side with the filter is facing downwards.



- Place the solid grey disc on top of the passive holder and grasp the two together firmly. This will ensure the pucks stay seated in place.



- Place the AGAT container on top of solid grey disc, lying on its side. If applicable for the site, place the “BLANK” container alongside the AGAT passive container.



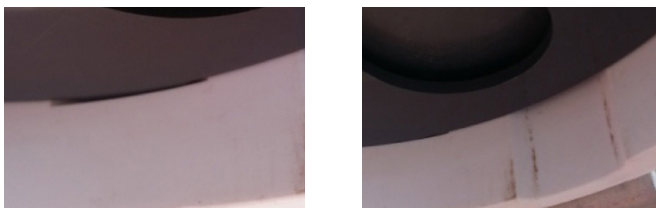
- Line up the four grey tongues on the passive holder with the vertical grooves inside the white passive hood.



- Lift upwards, keeping the passive holder level, until the horizontal grooves at the top of the vertical grooves are visible.



- Twist the passive holder clockwise (as viewed from below) and allow it to settle into notches.



Removal

- Push up on grey passive holder and turn counter-clockwise (as viewed from below).



- The four grey tongues on the passive holder should now be in line with the vertical grooves of the white passive hood.



- While supporting the grey passive holder, carefully lower out of the hood and obtain the black AGAT container (and “BLANK” container, if applicable) from atop the passive holder. The passive holder may stick and require some slight readjustments to fully allow it to come out of the hood. If the passive hood grooves are dirty and the passive holder requires more than gentle force to come out of the hood, it is recommended the grooves be cleaned of mud and/or debris.



- Firmly grasp the solid grey disc against the back of the grey passive holder. This will ensure the pucks stay seated in place.



- While holding both grey solid disc and passive holder horizontally (pucks hanging down), remove the solid disc from the back of the passive holder and set on clean, level area.



- Carefully gripping the sides of the pucks, one-by-one lift them clear of circular seats and set on clean, level area, sampling surface side facing upwards.



- Remove puck caps from bags inside AGAT container and place caps on pucks, pressing firmly around the edges.



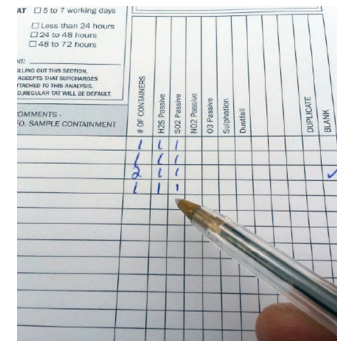
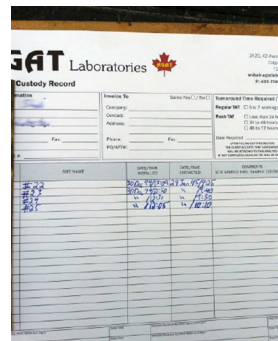
- Place puck and cap back inside the appropriate bag and reseal bag.



- Fill out sampling sheet contained inside AGAT container with the date and time the puck was collected and collector's initials. Also ensure that installation information is present and correct (correct site name/number, for instance).



- Fill out Chain of Custody form including Company name and location, site name/number, date & time installed, date & time extracted, and type(s) of passives exposed.



DATE/TIME INSTALLED	DATE/TIME EXTRACTED	SITE SAMPLE I
30 Dec 14/13:09	29 Jan 15/9:25	
30 Dec 14/18:50	" 19:40	
" 18:50	" 19:50	
" 18:05	" 10:10	

11. Place filled out sampling sheet and puck bags inside AGAT container and reseal with lid.



Containers with Duplicates

Duplicates are a form of quality control check to ensure the accuracy of the data set. If a given container has more than one passive of the same exposure type, treat it as just another puck when installing it in the grey passive holder with the rest of the passives. When filling out the paperwork, simply include the number of each exposure type on the sampling sheet during routine installation and again on the Chain of Custody form during routine removal.



Sampling Information	
<input checked="" type="checkbox"/>	H ₂ S (Hydrogen Sulphide)
<input checked="" type="checkbox"/>	SO ₂ (Sulfur Dioxide)
<input type="checkbox"/>	NO ₂ (Nitrogen Dioxide)
<input type="checkbox"/>	VOC (Volatile Organic Compound)
<input type="checkbox"/>	NH ₃ (Ammonia)

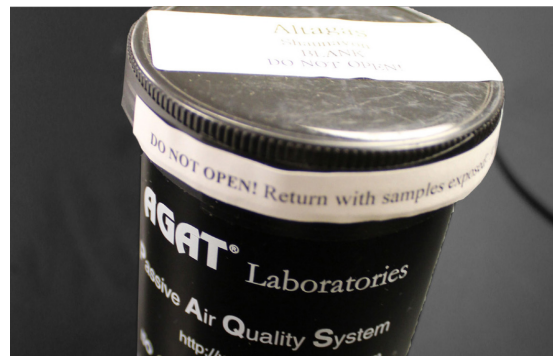
DATE	TIME	LOCATION	# OF CONTAINERS	H ₂ S Passive	SO ₂ Passive	NO ₂ Passive	O ₃ Passive	Sulphation	Dustfall	DUPLICATE	BLANK
			2	1	1						

Blank Containers

Containers labeled “BLANK” are another form of quality control and should not be opened under any circumstances. The passives inside these containers are not exposed to ambient air, however they are subjected to the same travel conditions as the rest of the passives and must be sent in for analysis with their respective month of monitoring. For example, the “BLANKS” labeled “April” must be submitted with the passives for April. The label on the side of the container indicates which month of passive monitoring the “BLANKS” should be returned with. These containers fit inside the passive hood alongside the AGAT container the passives came in during routine installation. Be sure to make note of the “BLANK” container on the sampling sheet during routine installation and again on the Chain of Custody form when they are removed from the field.

DATE	TIME	LOCATION	# OF CONTAINERS	H ₂ S Passive	SO ₂ Passive	NO ₂ Passive	O ₃ Passive	Sulphation	Dustfall	DUPLICATE	BLANK
			2	1	1						

Location: #5	<input type="checkbox"/> NO ₂ (Nitrogen Dioxide) <input type="checkbox"/> VOC (Volatile Organic Compound) <input type="checkbox"/> NH ₃ (Ammonia) <input type="checkbox"/> O ₃ (Ozone) <input checked="" type="checkbox"/> Other (Specify): Blank
--------------	--



Contact

For more information, contact your Business Development Representative, Client Project Manager, or contact us directly at:

Email: info@agatlabs.com

Phone: 403-735-2000